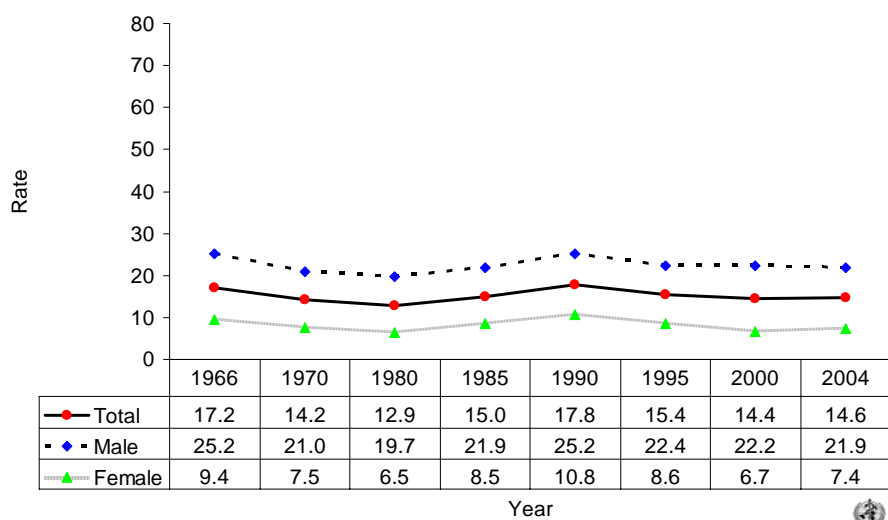
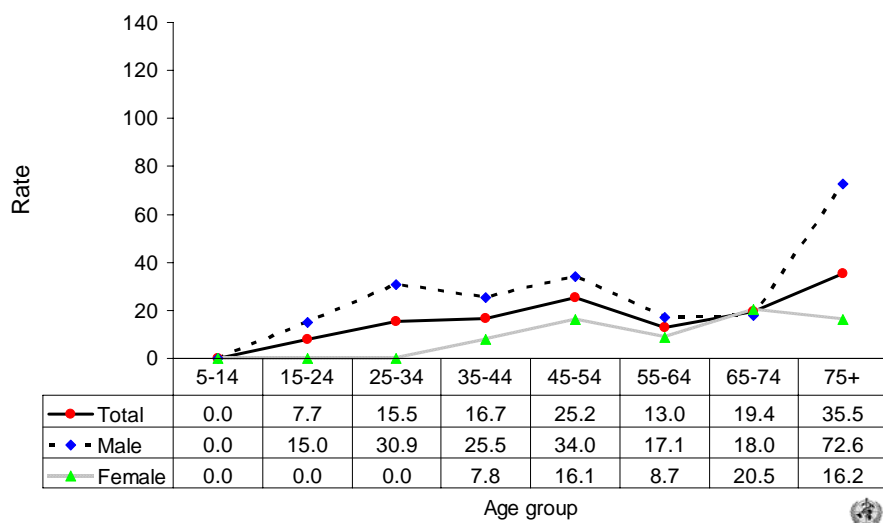


Suicide rates (per 100,000), by gender, Luxembourg, 1966-2004.



Suicide rates (per 100,000), by gender and age, Luxembourg, 2004.



Number of suicides by age group and gender. LUXEMBOURG, 2004.

| Age (years) | 5-14 | 15-24 | 25-34 | 35-44 | 45-54 | 55-64 | 65-74 | 75+ | All |
|-------------|------|-------|-------|-------|-------|-------|-------|-----|-----|
| Males | 0 | 4 | 10 | 10 | 11 | 4 | 3 | 7 | 49 |
| Females | 0 | 0 | 0 | 3 | 5 | 2 | 4 | 3 | 17 |
| Total | 0 | 4 | 10 | 13 | 16 | 6 | 7 | 10 | 66 |